

宗 地 图

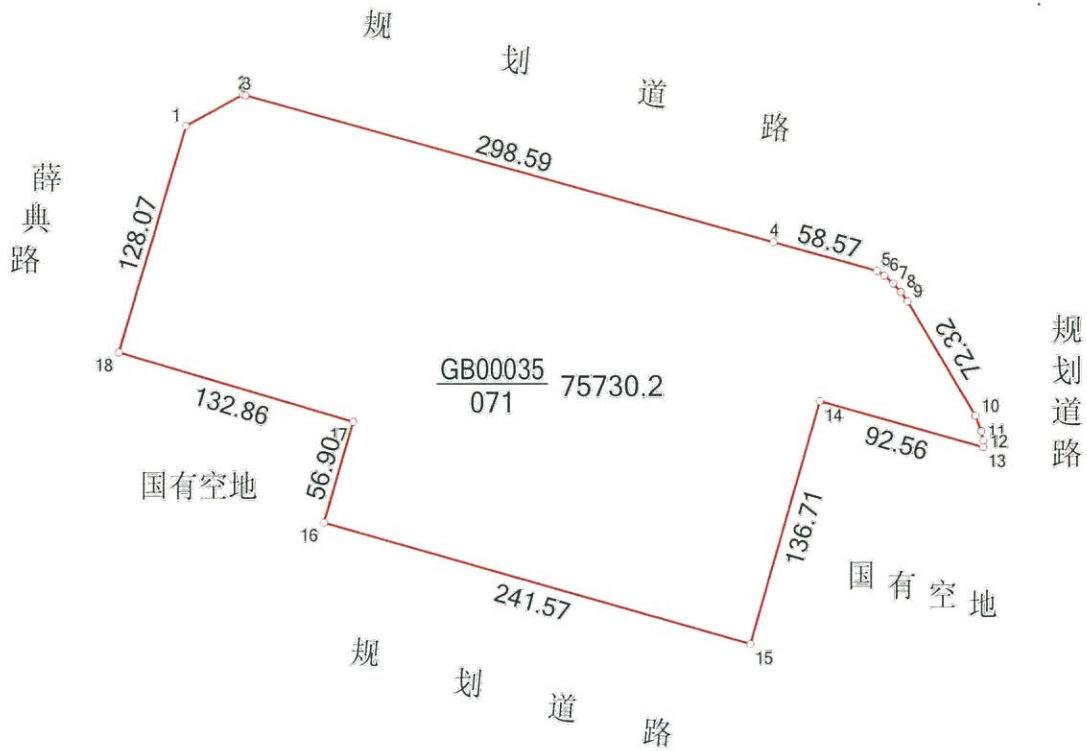
XDG-2021-38号B地块

单位: m · m²

3486.00-40542.75,
3486.00-40543.00,
3486.00-40543.25

320292002102GB00035

北



- 1-2: 35.06
- 2-3: 1.52
- 5-6: 4.75
- 6-7: 6.38
- 7-8: 6.18
- 8-9: 6.28
- 10-11: 8.97
- 11-12: 5.08
- 12-13: 3.66



绘图员: 吴景宇

1:4000
审核员: 常鹏

2021年4月29日

界址点成果表

宗地号 320292002102GB00035

宗地面积 (平方米) 75730.2

折合亩

113.60

界址点坐标

顺序号	点号	坐标		边长 (m)	备注
		X (m)	Y (m)		
1	1	3486362.792	40543031.055	35.06	
2	2	3486379.765	40543061.737	1.52	
3	3	3486379.359	40543063.204	298.59	
4	4	3486299.655	40543350.960	58.57	
5	5	3486284.020	40543407.408	4.75	
6	6	3486281.401	40543411.365	6.38	
7	7	3486277.230	40543416.197	6.18	
8	8	3486272.644	40543420.341	6.28	
9	9	3486267.491	40543423.935	72.32	
10	10	3486205.502	40543461.191	8.97	
11	11	3486197.132	40543464.408	5.08	
12	12	3486192.173	40543465.487	3.66	
13	13	3486188.519	40543465.339	92.56	
14	14	3486213.468	40543376.207	136.71	
15	15	3486082.142	40543338.215	241.57	
16	16	3486147.907	40543105.768	56.90	
17	17	3486202.477	40543121.866	132.86	
18	18	3486240.068	40542994.434	128.07	
19	1	3486362.792	40543031.055		

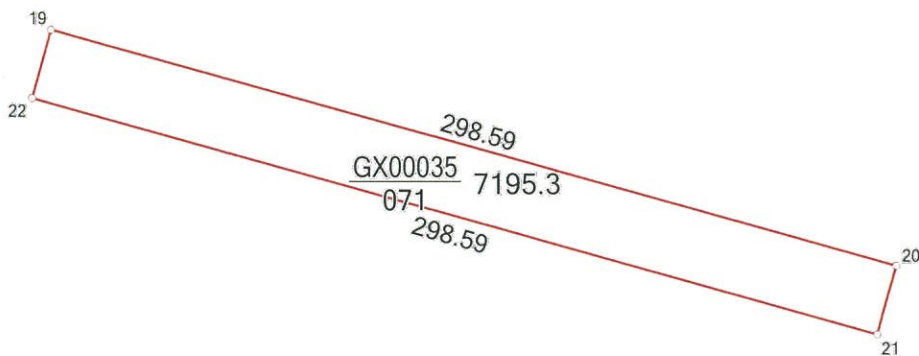
宗 地 图

XDG-2021-38号A、B地块中间地下

单位: m · m²

3486.25-40543.00,
3486.25-40543.25

320292002102GX00035



20-21: 24.15
22-19: 24.05

宗 地 图

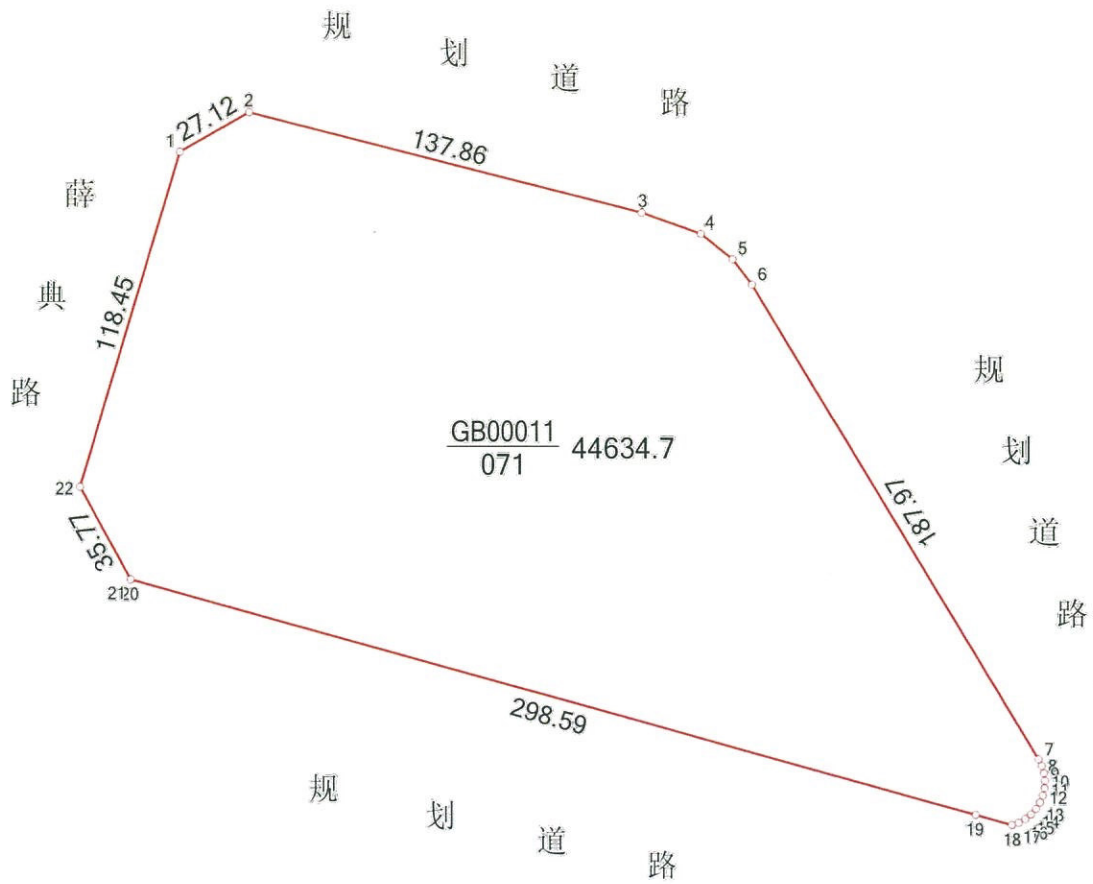
XDG-2021-38号A地块

单位: m · m²

3486.25-40543.00,
3486.25-40543.25,
3486.50-40543.00

320292002158GB00011

北



3-4: 21.54	4-5: 13.89
5-6: 10.85	7-8: 2.55
8-9: 2.54	9-10: 2.54
10-11: 2.54	11-12: 2.54
12-13: 2.54	13-14: 2.54
14-15: 2.54	15-16: 2.54
16-17: 2.54	17-18: 2.42
18-19: 12.80	20-21: 0.05



界址点成果表

宗地号 320292002158GB00011					
宗地面积（平方米） 44634.7			折合亩	66.95	
界址点坐标					
顺序号	点号	坐 标		边 长（m）	备 注
		X（m）	Y（m）		
1	1	3486547.360	40543086.132	27.12	
2	2	3486560.734	40543109.726	137.86	
3	3	3486526.694	40543243.319	21.54	
4	4	3486519.569	40543263.645	13.89	
5	5	3486510.970	40543274.558	10.85	
6	6	3486502.365	40543281.167	187.97	
7	7	3486341.744	40543378.817	2.55	
8	8	3486339.460	40543379.951	2.54	
9	9	3486337.022	40543380.680	2.54	
10	10	3486334.496	40543380.984	2.54	
11	11	3486331.954	40543380.855	2.54	
12	12	3486329.472	40543380.297	2.54	
13	13	3486327.120	40543379.326	2.54	
14	14	3486324.967	40543377.970	2.54	
15	15	3486323.075	40543376.268	2.54	
16	16	3486321.500	40543374.270	2.54	
17	17	3486320.286	40543372.033	2.42	
18	18	3486319.511	40543369.743	12.80	
19	19	3486322.924	40543357.405	298.59	
20	20	3486402.536	40543069.624	0.05	
21	21	3486402.549	40543069.576	35.77	

